

RAILTON MEEKS



Sussex Avenue Flat 1

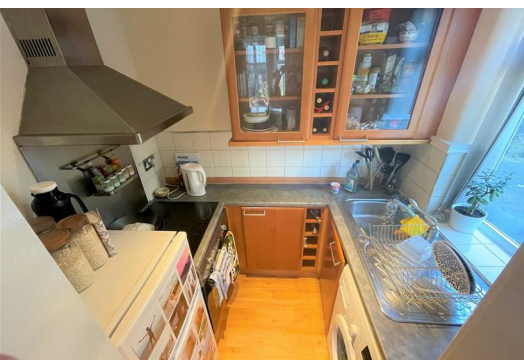
Didsbury, Manchester, M20 6AQ

£750 Per Calendar Month



Railton-Meek are pleased to offer to the market a stunning ground floor one bedroom flat situated in a great location. The flat comprises of a large living area, a separate compact kitchen including white goods, large bedroom and a good sized bathroom. The property has laminate throughout and is fully furnished with gas central heating and UPVC double glazed windows.

The flat is located within walking distance to vibrant Didsbury Village, local shops and public transport including a Metrolink tram station providing easy travel to Manchester City Centre. Tenants also benefit from the communal car park available. Fog lane park is also just a stone throw away.



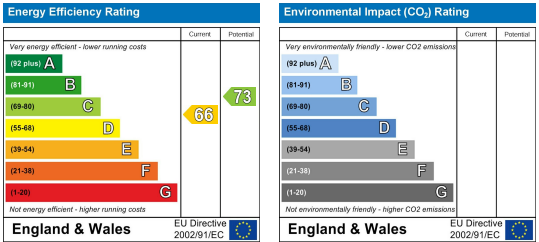
Area Map



Floor Plans



Energy Efficiency Graph



These particulars, whilst believed to be accurate are set out as a general outline only for guidance and do not constitute any part of an offer or contract. Intending purchasers should not rely on them as statements of representation of fact, but must satisfy themselves by inspection or otherwise as to their accuracy. No person in this firms employment has the authority to make or give any representation or warranty in respect of the property.